



THE TOWNSHIP OF UPPER

2100 Tuckahoe Road, Petersburg, NJ 08270
PO Box 205, Tuckahoe, NJ 08250-0205

PAUL E. DIETRICH, SR., P.E., P.P.

Township Engineer
Floodplain Manager
Municipal Housing Liaison - Computer Director

Phone: 609-628-2011 Ext. 244

Cell: 609-425-2867

Fax: 609-628-3092

E-mail: engineer@uppertownship.com

Reconstruction of Bayview Drive

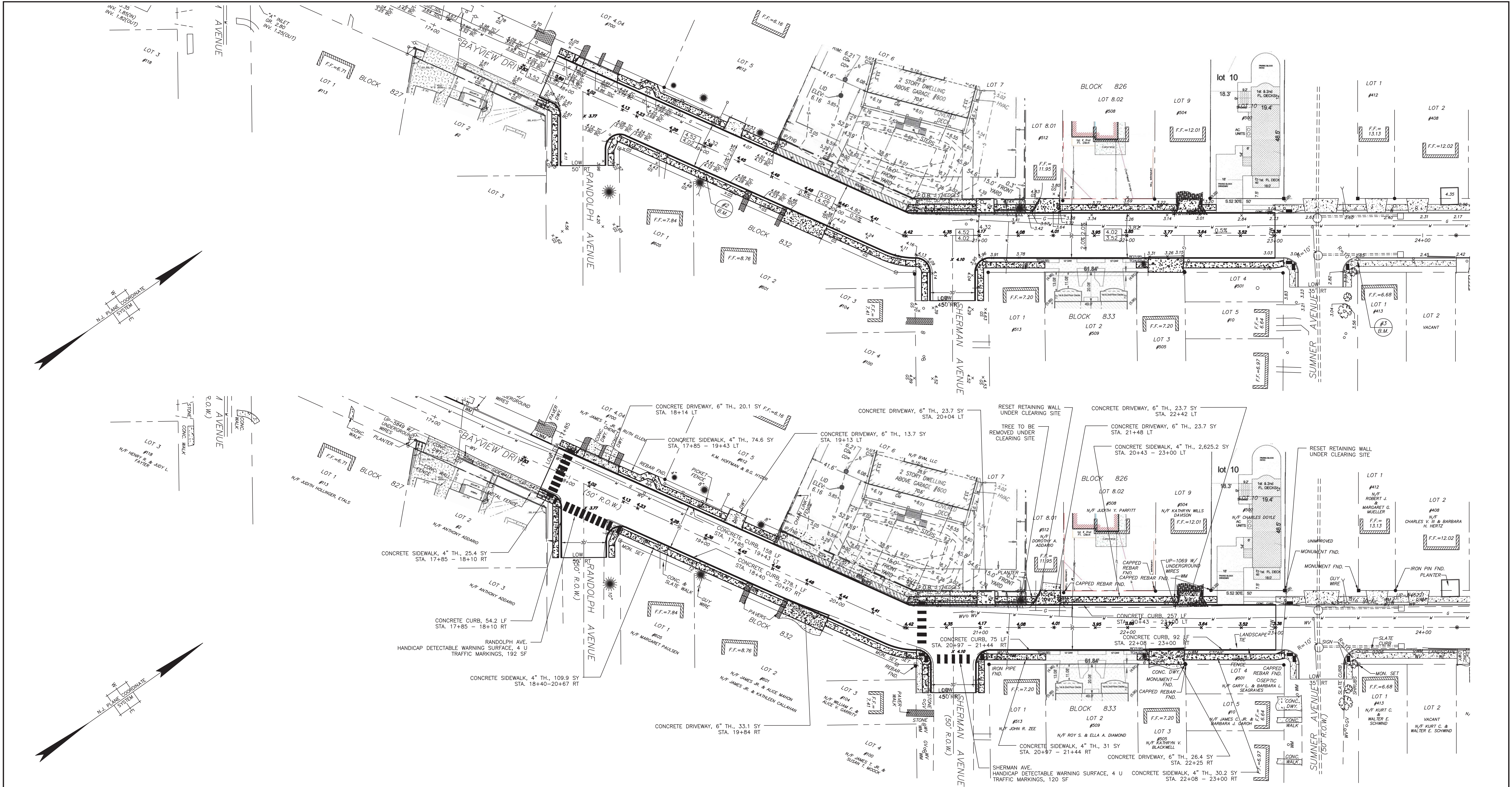
Project Limits: Sumner Ave to Randolph Ave, Strathmere

Project Estimate: \$175,000

Anticipated Construction: Spring or Fall 2019

Project is funded with a grant from the NJDOT.

Project will reconstruct the roadway, replace curb & sidewalk as necessary and provide crosswalks.

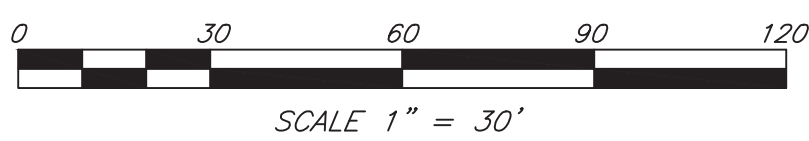


ITEM NO.	ESTIMATED DISTRIBUTION OF QUANTITIES	UNIT	PLAN QUANTITY	WHERE DIRECTED
6	PREPARATION OF ROAD BASE	S.Y.	19.36	—
7	EXCAVATION, UNCLASSIFIED	C.Y.	—	—
8	BORROW EXCAVATION	C.Y.	—	—
9	DENSE GRADED AGGREGATE BASE COURSE, 6" THICK	S.Y.	19.36	—
10	HOT MIX ASPHALT (HMA) 19L64, 3 1/2" THICK	TON	390	10
11	HOT MIX ASPHALT (HMA) 9.5L64 1 1/2" THICK	TON	167	13
12	INLET, TYPE B	EA	—	—
13	YARD GRATE	EA	—	—
14	SLOT DRAIN	EA	—	—
15	MANHOLE, 5' DIA.	EA	—	—
16	12" DUCTILE IRON PIPE	LF	—	—
17	12" HOPE TRENCH	LF	—	—
18	RESET WATER/GAS VALVE	EA	—	8
19	8"x16" CONCRETE VERTICAL CURB	LF	914.5	35.5
20	CONCRETE SIDEWALK, 4" TH.	SY	402.5	47.5
21	CONCRETE DRIVEWAY, 6" TH.	SY	143.5	56.5
22	DETECTABLE WARNING SURFACE	EA	8	—
23	TRAFFIC MARKINGS	SF	312	—
24	TOPSOILING	SY	425	—
25	FERTILIZING & SEEDING, TYPE A-3	SY	425	—
26	FIBER MULCHING	SY	425	—


THE FOLLOWING WORK SHALL BE PERFORMED UNDER CLEARING SITE:
1. REMOVE TREE AT STA. 21=35 LT
2. RELOCATE LANDSCAPING RETAINING WALL AT STA. 21+40 LT AND 23+10 RT.
3. LANDSCAPE BLOCK PLANTER & PAVERS BETWEEN STA. 29+31 - 29+75 RT.
4. RESET PAVERS AT #601 BAYVIEW AND #700 BAYVIEW.

Benchmark:

BM #3: MAG NAIL IN UP #9296, STA. 23+55.74, ELEV. 4.04
BM #2: MAG NAIL IN UP #3611, STA. 29+74.64, ELEV. 3.96



LEGEND	
	CONCRETE
	BRICK PAVERS
	VEGETATION LINE
	PAVEMENT SEAM
	SANITARY LINE
	GAS LINE
	WATER LINE
	FENCE
	OVERHEAD WIRE
	FIRE HYDRANT
	TREE
	SANITARY MANHOLE
	BUSH/SHRUB
	REGULATORY/STREET SIGN
	UTILITY POLE
	WATER VALVE
	GAS VALVE
	WATER METER
	SEWER CLEANOUT
	MAIL BOX
	SEWER VENT
	STORM INLET
	UTILITY POLE w/STREET LIGHT
	GUY WIRE
	GUY POLE

		PREPARED BY :			UPPER TOWNSHIP ENGINEER'S OFFICE 2100 TUCKAHOE ROAD, P.O. BOX 205 TUCKAHOE, N.J. 08250-0205 609-628-2011 FAX 609-628-3092 email: engineer@uppertownship.com					
		PAUL E. DIETRICH, SR. PROFESSIONAL ENGINEER N.J.P.E. LICENSE NO. 41738								
		RECONSTRUCTION OF BAYVIEW DRIVE, PH. 3 STRATHMERE SECTON TOWNSHIP OF UPPER, CAPE MAY COUNTY, NJ								
		DRAWN: PED			CHECKED:		DATE: 12/13/18	SCALE: 1"=30'	SHEET 2 OF 3	DWG. NO:1019-3
		DATE			REVISIONS					