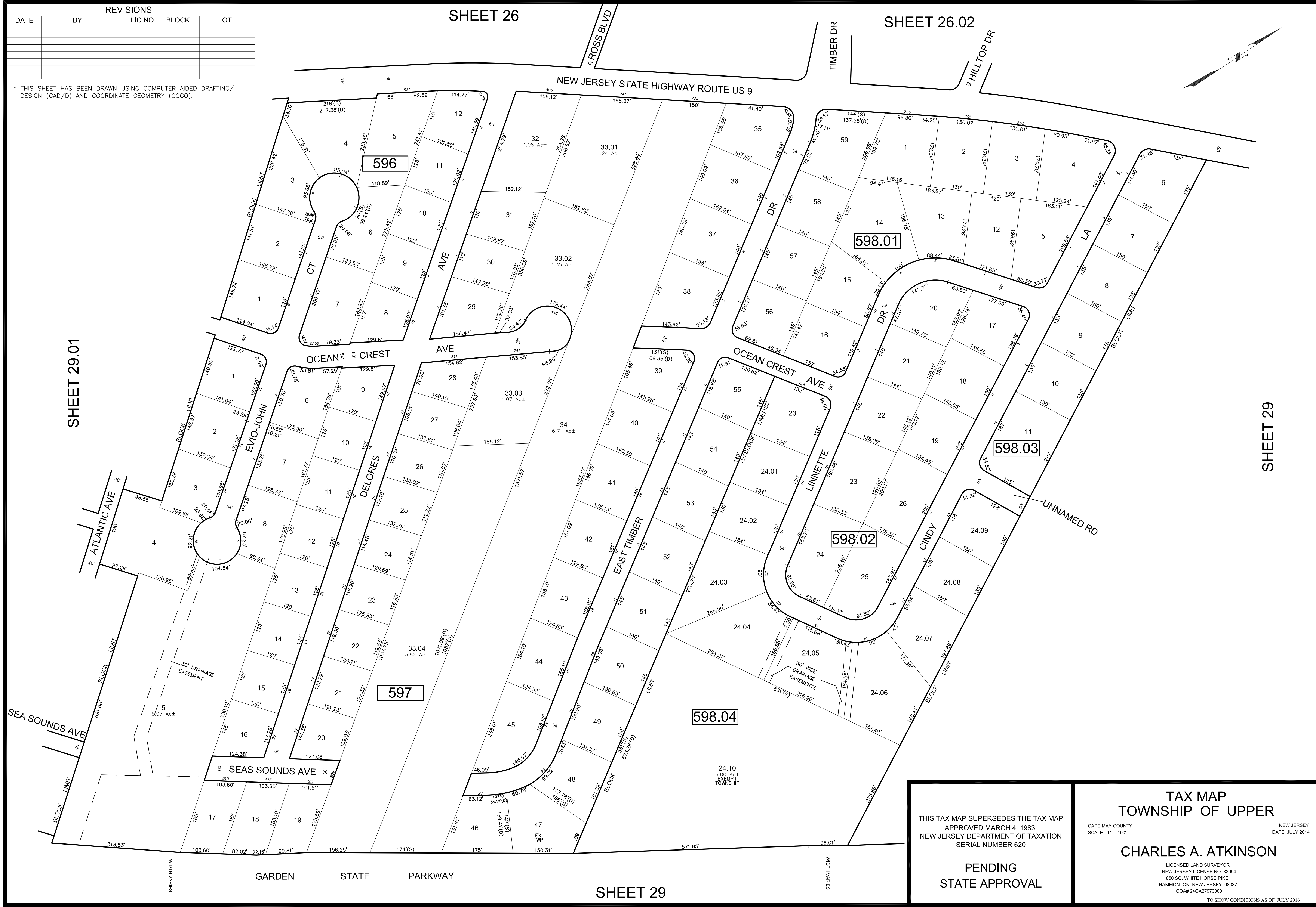


REVISIONS				
DATE	BY	LIC.NO	BLOCK	LOT

SHEET 26

SHEET 26.02

* THIS SHEET HAS BEEN DRAWN USING COMPUTER AIDED DRAFTING/ DESIGN (CAD/D) AND COORDINATE GEOMETRY (COGO).



SHEET 29.01

SHEET 29

SHEET 29

THIS TAX MAP SUPERSEDES THE TAX MAP APPROVED MARCH 4, 1983. NEW JERSEY DEPARTMENT OF TAXATION SERIAL NUMBER 620

PENDING STATE APPROVAL

TAX MAP TOWNSHIP OF UPPER

CAPE MAY COUNTY
SCALE: 1" = 100'

NEW JERSEY
DATE: JULY 2014

CHARLES A. ATKINSON

LICENSED LAND SURVEYOR
NEW JERSEY LICENSE NO. 33994
850 SO. WHITE HORSE PIKE
HAMMINGTON, NEW JERSEY 08037
COAP 24GA27973300

TO SHOW CONDITIONS AS OF JULY 2016