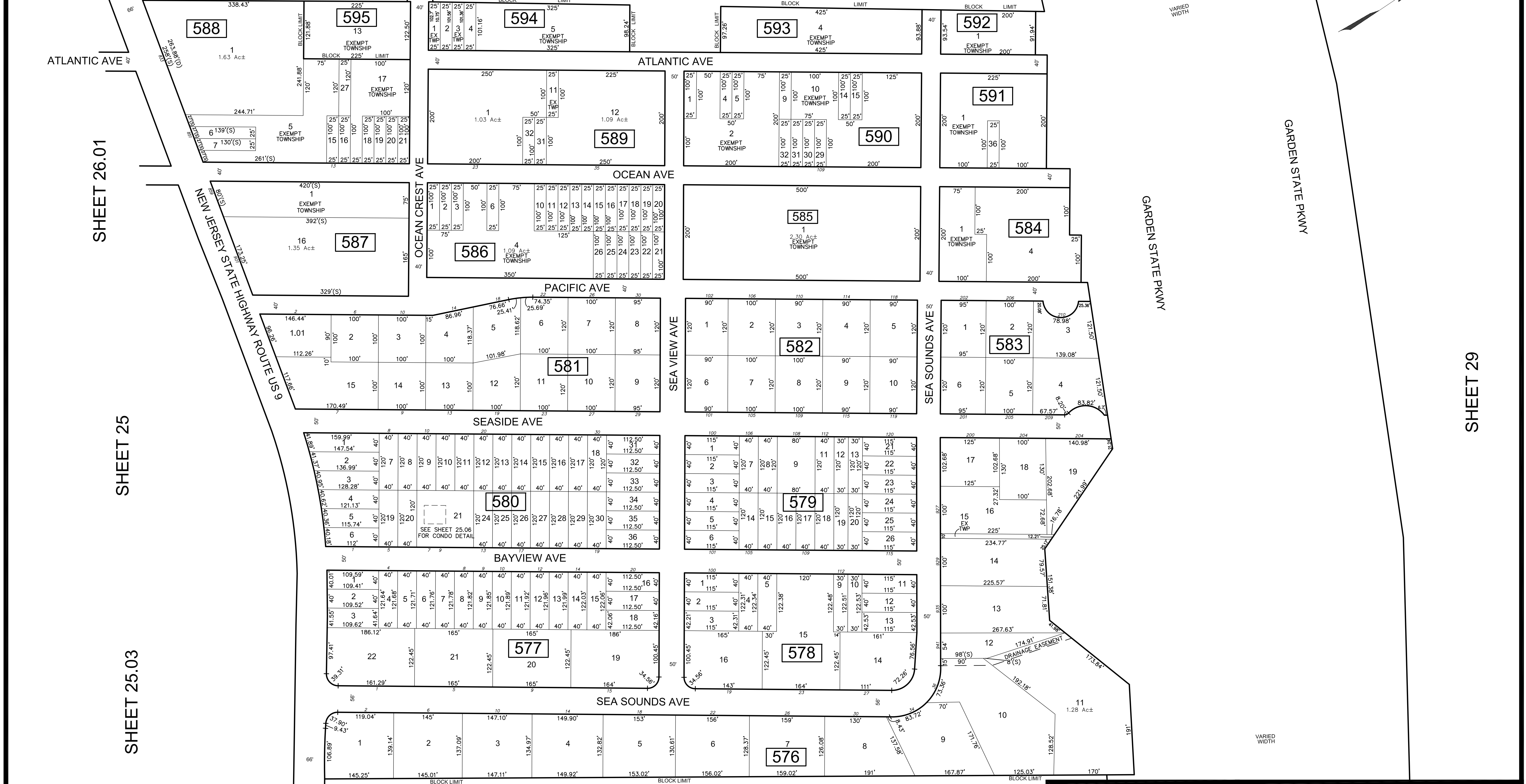


REVISIONS				
DATE	BY	LIC.NO	BLOCK	LOT
05/2015	CHARLES A. ATKINSON	33994	584	4
05/2015	CHARLES A. ATKINSON	33994	581	15

SHEET 29.04

* THIS SHEET HAS BEEN DRAWN USING COMPUTER AIDED DRAFTING/ DESIGN (CAD/D) AND COORDINATE GEOMETRY (COGO).



SHEET 26.01

SHEET 25

SHEET 25.03

SHEET 29

SHEET 25

<p>THIS TAX MAP SUPERSEDES THE TAX MAP APPROVED MARCH 4, 1983. NEW JERSEY DEPARTMENT OF TAXATION SERIAL NUMBER 620</p> <p>PENDING STATE APPROVAL</p>	<p>TAX MAP TOWNSHIP OF UPPER</p> <p>CAPE MAY COUNTY SCALE: 1" = 100'</p>	<p>NEW JERSEY DATE: JULY 2014</p>
	<p>CHARLES A. ATKINSON</p> <p>LICENSED LAND SURVEYOR NEW JERSEY LICENSE NO. 33994 850 SO. WHITE HORSE PIKE HAMMINGTON, NEW JERSEY 08037 COAP 24GA2797300</p>	
	<p>TO SHOW CONDITIONS AS OF JULY 2014</p>	