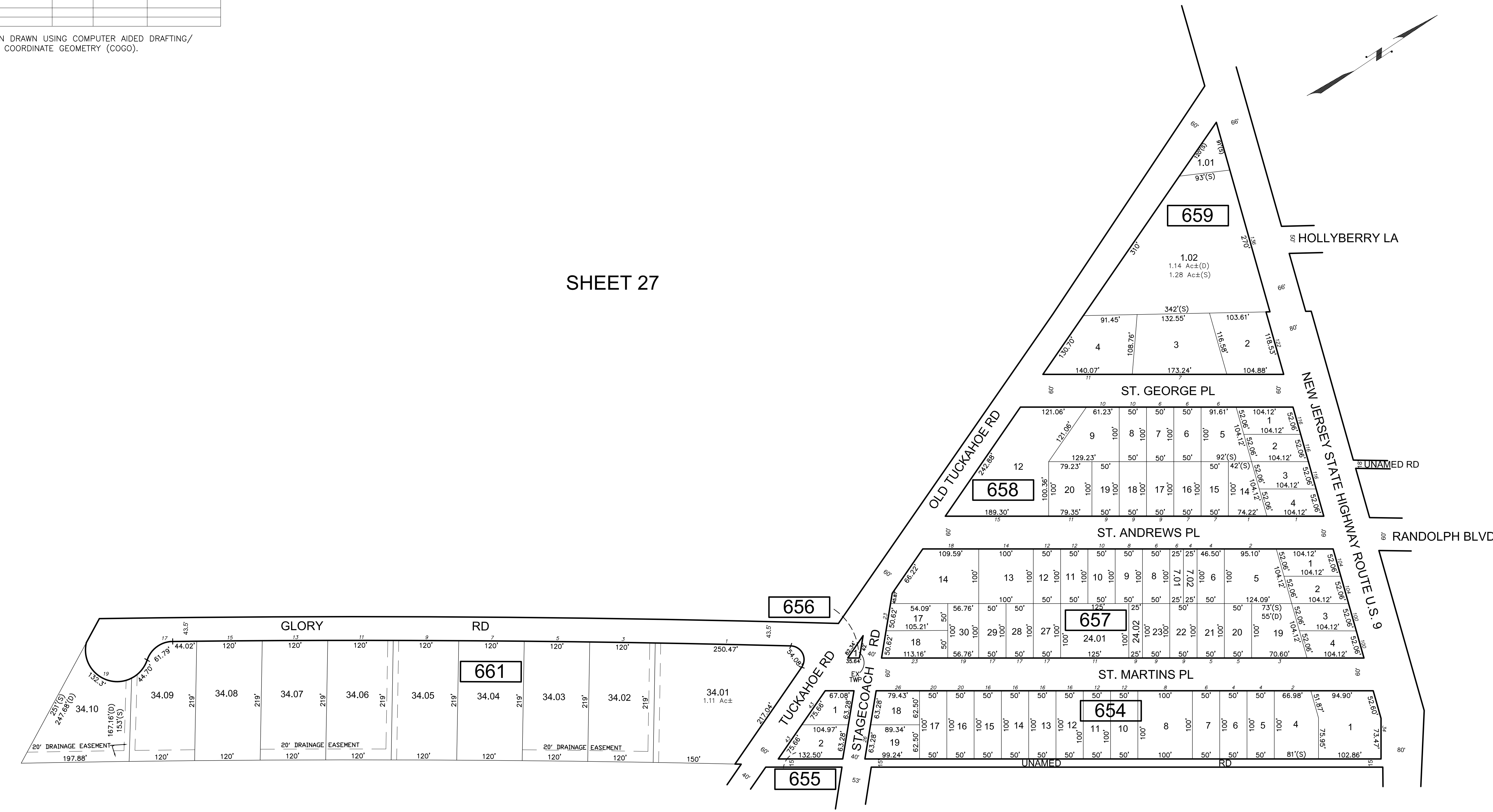


REVISIONS				
DATE	BY	LIC.NO	BLOCK	LOT

\* THIS SHEET HAS BEEN DRAWN USING COMPUTER AIDED DRAFTING/ DESIGN (CAD/D) AND COORDINATE GEOMETRY (COGO).

SHEET 27

SHEET 27



SHEET 28

SHEET 28.02

SHEET 27

THIS TAX MAP SUPERSEDES THE TAX MAP APPROVED MARCH 4, 1983. NEW JERSEY DEPARTMENT OF TAXATION SERIAL NUMBER 620

**PENDING STATE APPROVAL**

**TAX MAP TOWNSHIP OF UPPER**

CAPE MAY COUNTY NEW JERSEY  
SCALE: 1" = 100' DATE: JULY 2014

**CHARLES A. ATKINSON**  
LICENSED LAND SURVEYOR  
NEW JERSEY LICENSE NO. 33984  
850 SO. WHITE HORSE PIKE  
HAMMINGTON, NEW JERSEY 08037  
CO#P 24GA27973300

TO SHOW CONDITIONS AS OF JULY 2014