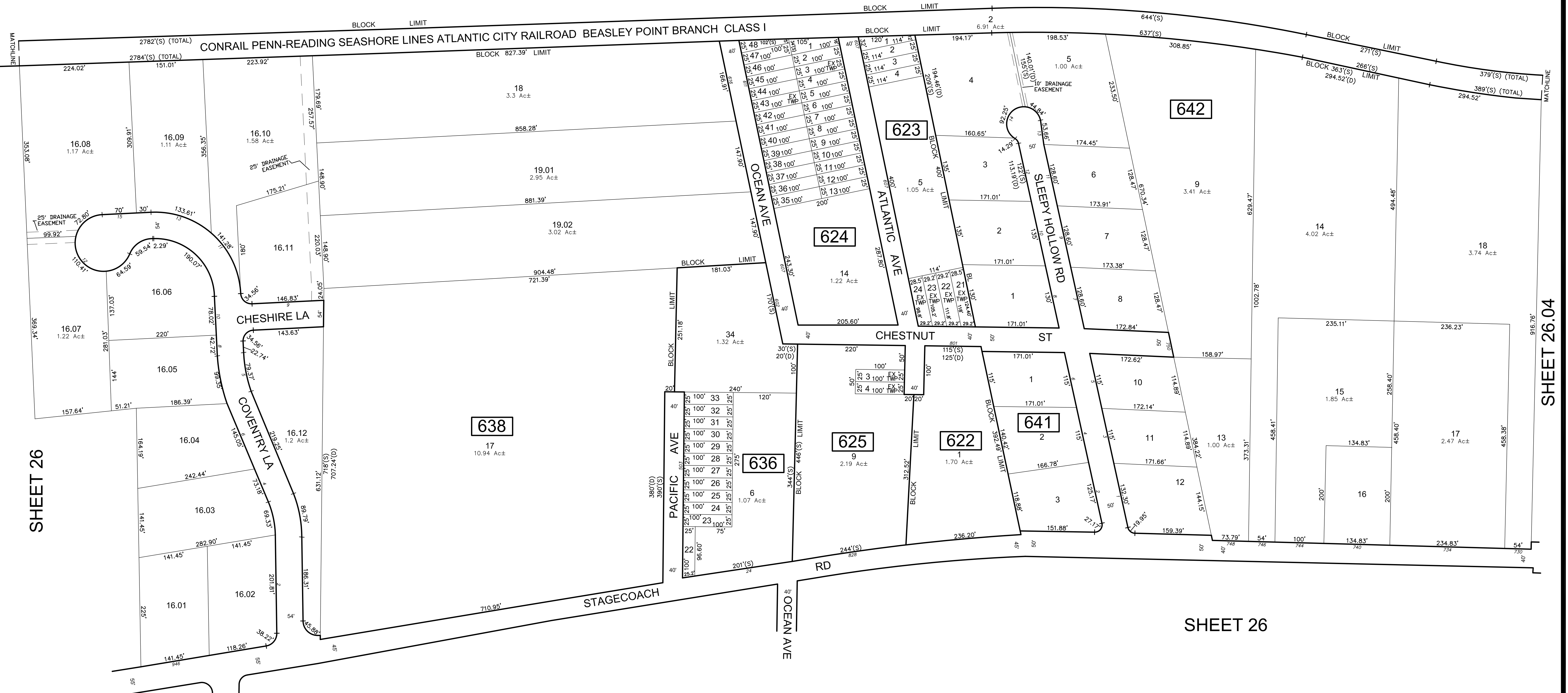


REVISIONS				
DATE	BY	LIC.NO	BLOCK	LOT

* THIS SHEET HAS BEEN DRAWN USING COMPUTER AIDED DRAFTING/ DESIGN (CAD/D) AND COORDINATE GEOMETRY (COGO).

SHEET 26



SHEET 26

SHEET 26.04

SHEET 25.03

SHEET 26

SHEET 26.01

SHEET 26

THIS TAX MAP SUPERSEDES THE TAX MAP APPROVED MARCH 4, 1983. NEW JERSEY DEPARTMENT OF TAXATION SERIAL NUMBER 620

PENDING STATE APPROVAL

TAX MAP TOWNSHIP OF UPPER

CAPE MAY COUNTY NEW JERSEY
SCALE: 1" = 100' DATE: JULY 2014

CHARLES A. ATKINSON
LICENSED LAND SURVEYOR
NEW JERSEY LICENSE NO. 33994
850 SO. WHITE HORSE PIKE
HAMMINGTON, NEW JERSEY 08037
COAP 24GA2797300

TO SHOW CONDITIONS AS OF JULY 2014