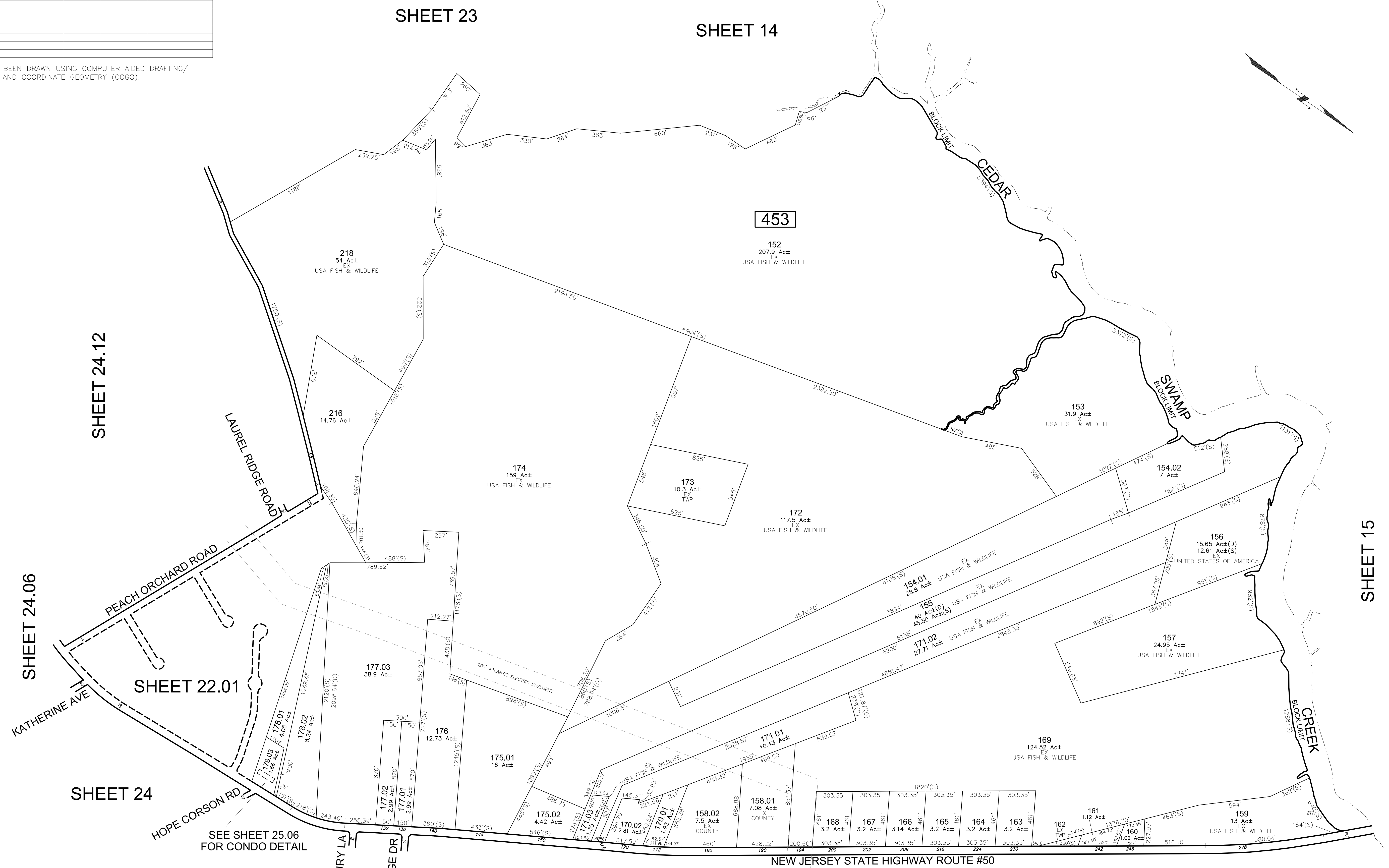


REVISIONS				
DATE	BY	LIC.NO	BLOCK	LOT

* THIS SHEET HAS BEEN DRAWN USING COMPUTER AIDED DRAFTING/ DESIGN (CAD/D) AND COORDINATE GEOMETRY (COGO).



SHEET 24.12

SHEET 24.06

SHEET 24

SHEET 22.01

SHEET 21.01

SHEET 21

SHEET 23

SHEET 14

SHEET 15

SEE SHEET 25.06 FOR CONDO DETAIL

453

152
207.9 Ac±
EX
USA FISH & WILDLIFE

218
54 Ac±
EX
USA FISH & WILDLIFE

216
14.76 Ac±
EX

174
159 Ac±
EX
USA FISH & WILDLIFE

173
10.3 Ac±
EX
TWP

172
117.5 Ac±
EX
USA FISH & WILDLIFE

153
31.9 Ac±
EX
USA FISH & WILDLIFE

154.02
7 Ac±
EX

156
15.65 Ac±(D)
12.61 Ac±(S)
EX
UNITED STATES OF AMERICA

157
24.95 Ac±
EX
USA FISH & WILDLIFE

177.03
38.9 Ac±
EX

176
12.73 Ac±
EX

175.01
16 Ac±
EX

175.02
4.42 Ac±
EX

177.03
1.86 Ac±
EX

178.01
4.05 Ac±
EX

178.02
8.24 Ac±
EX

177.01
2.99 Ac±
EX

177.02
2.99 Ac±
EX

170.01
2.81 Ac±
EX

170.02
2.81 Ac±
EX

170.03
2.81 Ac±
EX

158.01
7.08 Ac±
EX
COUNTY

158.02
7.5 Ac±
EX
COUNTY

161
1.12 Ac±
EX

162
EX

163
3.2 Ac±
EX

164
3.2 Ac±
EX

165
3.2 Ac±
EX

166
3.14 Ac±
EX

167
3.2 Ac±
EX

168
3.2 Ac±
EX

169
124.52 Ac±
EX
USA FISH & WILDLIFE

160
1.02 Ac±
EX

159
13 Ac±
EX
USA FISH & WILDLIFE

TAX MAP
TOWNSHIP OF UPPER

CAPE MAY COUNTY NEW JERSEY
SCALE: 1" = 400' DATE: JULY 2016

ED CLAY

LICENSED LAND SURVEYOR
NEW JERSEY LICENSE NO. 34842
850 SO. WHITE HORSE PIKE
HAMMONTON, NEW JERSEY 08037
COAP 24GA2797300

TO SHOW CONDITIONS AS OF JULY 2016