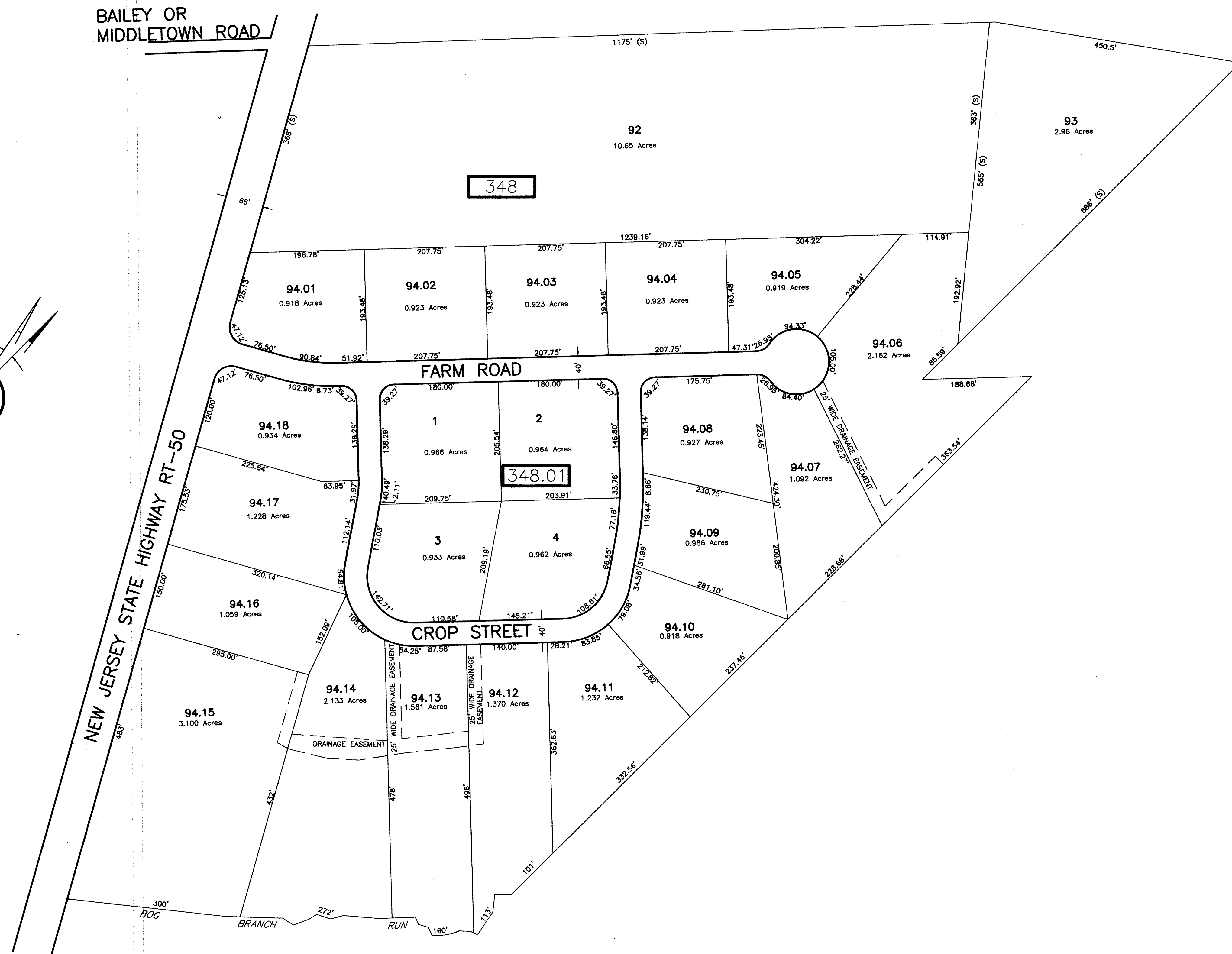
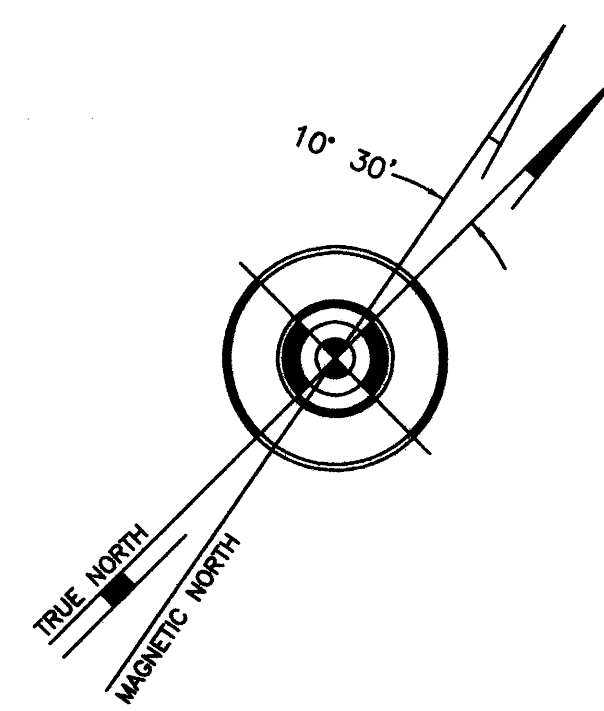


DATE	BY	REVISED
10-23-13	MJS	REV. PER DIV. OF TAXATION COMMENTS

SHEET 12

SHEET 12

SHEET 12



SHEET 12

TAX MAP  
 TOWNSHIP OF UPPER  
 CAPE MAY COUNTY, NEW JERSEY  
 SCALE: 1"=100' MARCH 8, 2005  
 MARK J. GIBSON  
 N.J. LIC. P.L.S. No. 32115  
 GIBSON ASSOCIATES, P.A.  
 4211 LANDIS AVENUE  
 SEA ISLE CITY, NEW JERSEY 08243

TO SHOW CONDITIONS AS OF JULY 2014

COA# 24GA27973300