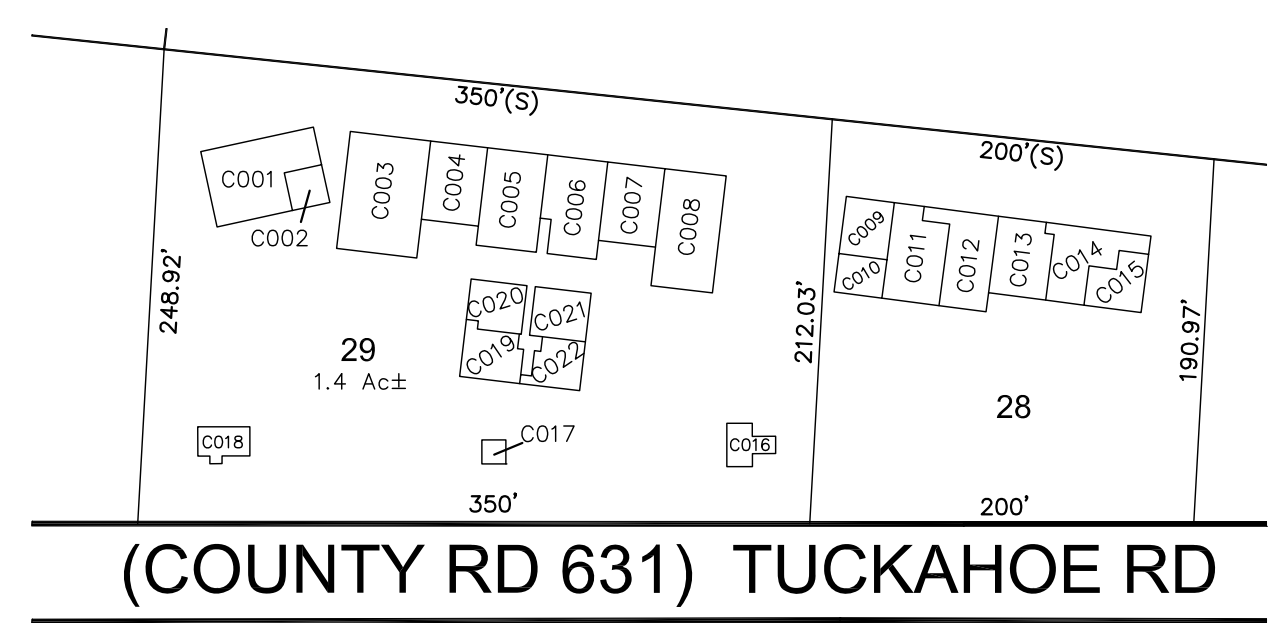


SHEET 19

REVISIONS				
DATE	BY	LIC.NO	BLOCK	LOT

* THIS SHEET HAS BEEN DRAWN USING COMPUTER AIDED DRAFTING/ DESIGN (CAD/D) AND COORDINATE GEOMETRY (COGO).

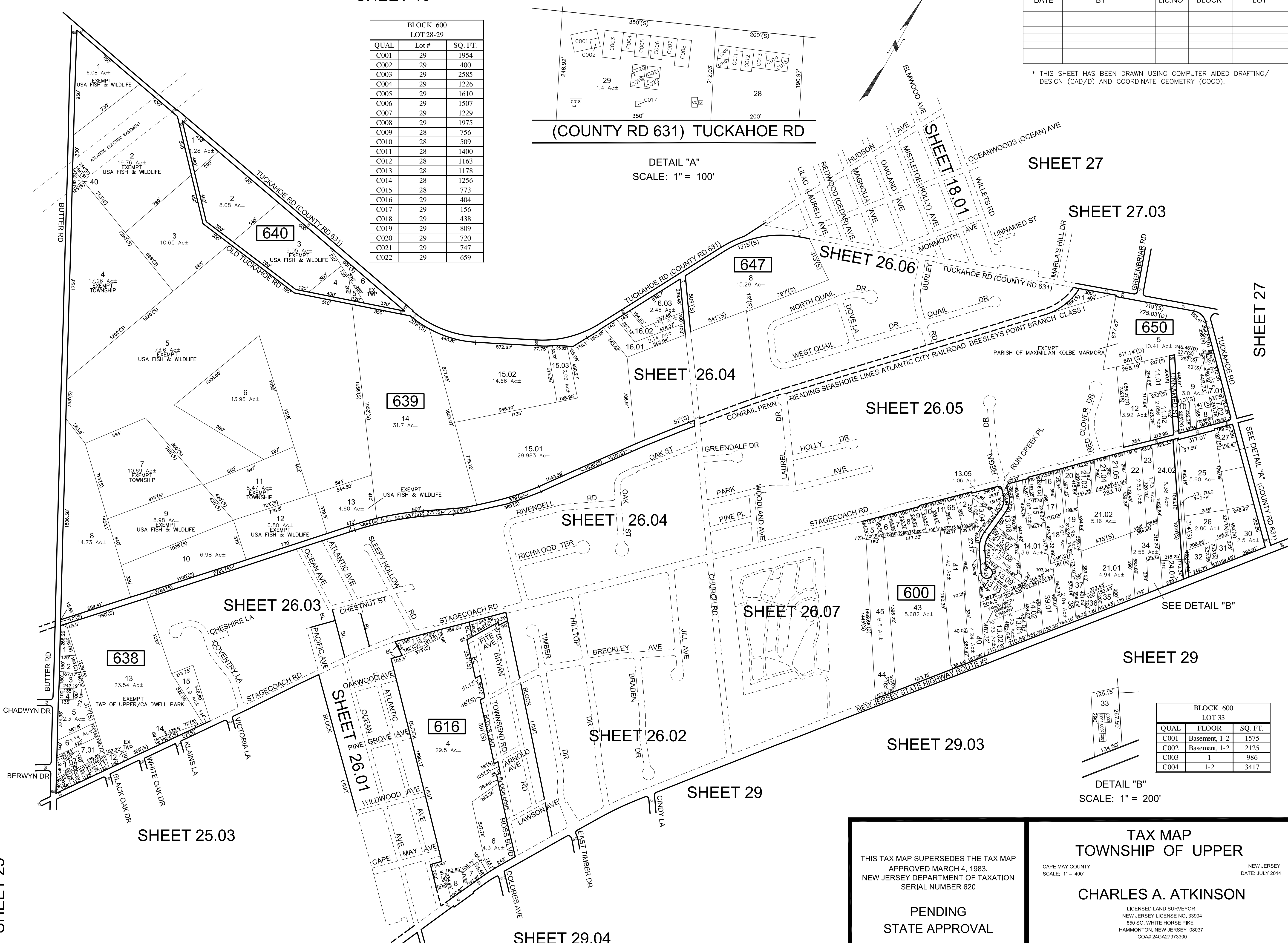
BLOCK 600 LOT 28-29		
QUAL	Lot #	SQ. FT.
C001	29	1954
C002	29	400
C003	29	2585
C004	29	1226
C005	29	1610
C006	29	1507
C007	29	1229
C008	29	1975
C009	28	756
C010	28	509
C011	28	1400
C012	28	1163
C013	28	1178
C014	28	1256
C015	28	773
C016	29	404
C017	29	156
C018	29	438
C019	29	809
C020	29	720
C021	29	747
C022	29	659



SHEET 20

SHEET 20.01

SHEET 25



BLOCK 600 LOT 33		
QUAL	FLOOR	SQ. FT.
C001	Basement, 1-2	1575
C002	Basement, 1-2	2125
C003	1	986
C004	1-2	3417

DETAIL "B"
SCALE: 1" = 200'

THIS TAX MAP SUPERSEDES THE TAX MAP APPROVED MARCH 4, 1983. NEW JERSEY DEPARTMENT OF TAXATION SERIAL NUMBER 620

PENDING STATE APPROVAL

TAX MAP TOWNSHIP OF UPPER

CAPE MAY COUNTY SCALE: 1" = 400'

NEW JERSEY DATE: JULY 2014

CHARLES A. ATKINSON

LICENSED LAND SURVEYOR
NEW JERSEY LICENSE NO. 33994
850 SO. WHITE HORSE PIKE
HAMMINGTON, NEW JERSEY 08037
COAP 24GA27973300

TO SHOW CONDITIONS AS OF JULY 2014